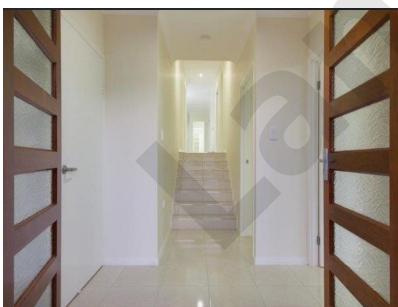




Treetops



Living Area : 176.20m²
Garage Area : 40.88m²
Patio : 17.08m²
Porch : 5.24m²
Total Area : 239.40m²

* These images are for illustration only. The information in this page is not intended to be a part of any contract. Measurements are approximate only and should be independently verified if need be. This plan remains wholly or in part the property of Langtree Homes.

